

RELAY MODULE

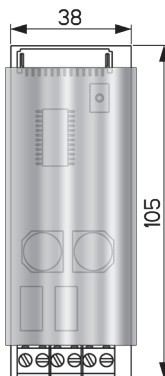
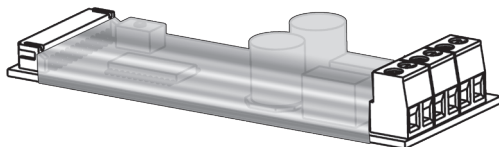
99.724

INSTALLATION/USE INSTRUCTIONS

MADE
IN
ITALY



All connections MUST be made with the electrical supply switched off and the batteries disconnected.



GENERAL WARNINGS

This manual is intended for technically qualified and trained installers.

Mottura Serrature di Sicurezza S.p.A. thanks you for choosing this product and reminds you:

- Read the instructions very carefully before installing or doing any maintenance on the device.
- All assembly and connection procedures must be done according to Rules of Good Engineering as well as in conformity to law.
- DO NOT install this device in explosive environments or atmospheres or in the presence of flammable fumes/gases.
- DO NOT install this device on a door with risk of contact with water or atmospheric agents unless the door is adequately protected.
- Always disconnect the power supply and isolate all live parts before installing or doing any maintenance on the device. Take all possible precautions to eliminate the risk of electrical shock when doing the installation and/or maintenance procedures described in this manual.
- The installer must give these instructions and all maintenance instructions to the user.
- Keep these instructions for future use and attach the sales receipt to validate the warranty.
- In case of problems, contact your authorized dealer only.

Mottura Serrature di Sicurezza S.p.A. may change the characteristics of the products described in these instructions at any time and without notice.

WARRANTY TERMS

This device has been inspected by Mottura Serrature di Sicurezza S.p.A. and is guaranteed against all manufacturing defects for the period defined by Italian law; the period begins on the date of purchase as demonstrated by the sales receipt. The warranty is effective if the sales receipt, bearing information identifying the device, is shown to the dealer or service personnel. The warranty covers the replacement or repair of parts found defective due to faulty manufacture; shipping costs to and from service centers are charged to the customer.

In case of a repeated malfunction of the same origin or a malfunction that cannot be repaired, Mottura Serrature di Sicurezza S.p.A. may decide, in its final judgment, to replace the entire device. The warranty on the replacement device will continue to the expiration of the original device. If the device must be serviced at the customer's home, the customer is required to pay (if requested) a minimum charge to cover the transfer costs of authorized service personnel.

Transport is at the customer's risk if the customer ships the device, and at the service personnel's risk if the device is picked up and transported by service personnel.

LIMITS OF LIABILITY

The warranty does not cover damage deriving from:

- negligence, carelessness, or use other than as described below
- failure to protect the device before doing any procedure that may generate scrap or waste (welding, drilling of panels, drilling of structure, etc.) that prevents its correct functioning
- maintenance work not conforming to these instructions or done by unauthorized personnel
- use of accessories/components that are not original Mottura products
- shipping of the device without the necessary precautions
- any circumstances not attributable to manufacturing defects.

Operating temperature: -10°C to +55°C. In addition, Mottura Serrature di Sicurezza S.p.A. declines all liability for any harm to persons or damage to property deriving from failure to comply with all of the instructions and warnings contained in this manual.



ATTENTION: before powering and using this product, it is mandatory to read these notes, the instructions for use and any other document supplied, both in paper and electronic format, including by means of links of any kind. This product is intended for the exclusive use for which it was designed, built and sold; any other use other than that indicated as "compliant use" is not compliant and therefore not admissible. The intended use for this product is:



INTERFACE WITH RELAY FOR ELECTRONIC LOCK OPENING

Any other use not expressly provided for or described here and in the official documentation is to be considered non-compliant and potentially dangerous for people, animals, things and the environment. The user assumes all risks in case of use that does not comply with the description contained herein. Mottura S.p.A. is in no way responsible for any non-compliant and unforeseen uses for this product, which may cause problems or damage of any kind to people, animals, things and the environment.

1 -	INTRODUCTION	page 3
2 -	SET-UP BUTTON FUNCTIONS	
2.1	fingerprint escutcheon authentication	4
2.2	SETTING THE SINGLE RELAY MODE	4
2.3	SETTING THE DOUBLE RELAY MODE	4
2.4	Complete reset of the control unit	4
3 -	ELECTRICAL WIRING	5
4 -	TECHNICAL DATA	5
5 -	KEYPAD PROGRAMMING - TAG MANAGEMENT	
5.1	MEMORIZING MASTER TAG KEYS	6
5.2	MEMORIZING SERVICE TAG KEYS	6
5.3	DELETING INDIVIDUAL TAG	7
5.4	DELETING ALL TAG KEYS	7
5.5	DISABLING/ENABLING SERVICE TAG KEYS	8
6 -	Keypad PROGRAMMING - CODE MANAGEMENT	
6.1	MEMORIZING PERSONAL ACCESS CODES	9
6.2	DELETING A PERSONAL ACCESS CODE	9
6.3	DELETING ALL PERSONAL ACCESS	10
7 -	DOUBLE RELAY FUNCTION	11



Pursuant to article 26 of Italian Legislative Decree no. 49 of 14 March 2014 "Implementation of EU Directive 2012/19 concerning waste electrical and electronic equipment (WEEE)" and article 9 of Italian Legislative Decree no. 188 of 20 November 2008 "Implementation of EC Directive 2006/66 on batteries and accumulators and waste batteries and accumulators" adequate waste sorting for subsequent sending of disposed equipment to recycling, treatment and environmentally compatible disposal contributes to avoiding possible negative effects on the environment and human health and promotes reuse and/or recycling of the materials composing the equipment. Unlawful disposal of the product by the user may result in the application of penalties pursuant to current laws and regulations on the matter. We remind that batteries and power adapters, if present, must be removed before the device is disposed. Batteries and adapters must be collected and separately disposed.



WARNING : if there are no TAGs memorized in the control unit (when new or after a reset), the programming mode can be accessed via any free Mottura TAG! Consequently, your own master TAGs need to be memorized immediately, followed by any service TAGs, if foreseen, in order to ensure maximum security. After having completed this, only those TAGs that have been memorized will be accepted by the control unit.

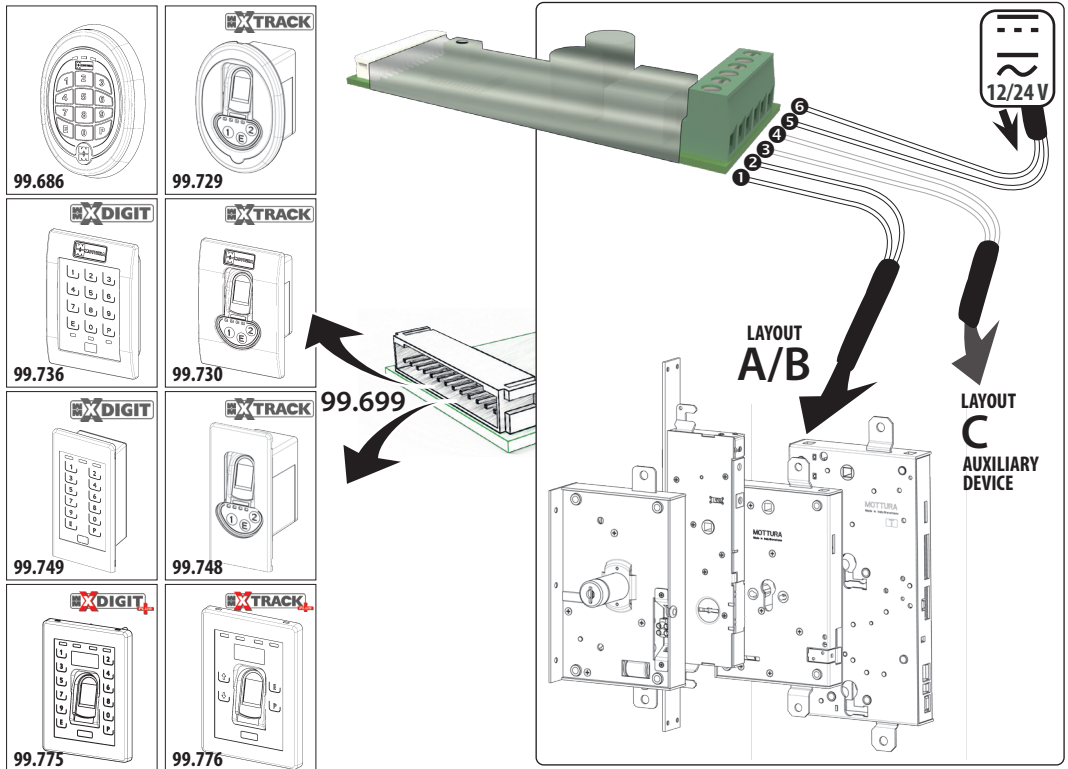
1 - INTRODUCTION

Relay MODULE (99.724) to start up to an actuator previously stored access credentials. Access credentials can be a numeric code, a TAG RFID, or a fingerprint that can be inserted by means of a dedicated external device connected to the control unit. Relay module permits the use of a Mottura electronic device (fingerprint reader art. 99.729/730/748/776 or numeric keypad art. 99.686/736/749/775) on any electric, electronic or motorized locks, via cable art. 99.699 (not included).

The system can operate with a keypad, with a TAG RFID reader or with a fingerprint, for security reasons it is mandatory to store at least one master TAG to enable relay operation. The consensus given by the relay lasts for 1 second. Main power 12-24 V ac-dc with mains adaptor cod. 99.683 or similar.

Relays can be configured, by means of the SET-UP button on the control unit, to work individually or in pairs.

SINGLE RELAY		DOUBLE RELAY	
OPEN		OPEN / CLOSE	
RALAY 1	Closes at any authorized access credential	RALAY 1	Closes by entering an authorized access credential and pressing a key (*)
RALAY 2	not used	RALAY 2	Closes by entering an authorized access credential and pressing a key (*)
(*) Depending on the type of showcase used, you must press a specific key within 10 sec. (See chapter 7). This configuration is useful when you need to have two separate commands: Such as one that opens and the other closes.			
The consensus given by the relay lasts for 1 second.			



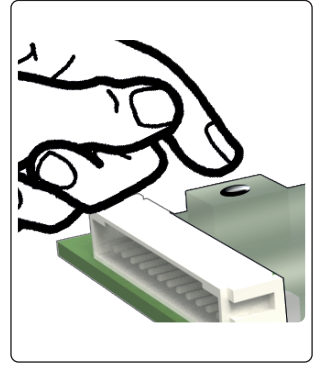
2 - SET-UP BUTTON FUNCTIONS

Relay MODULE is factory set up and does not require any changes. The following steps should only be performed only if needed to change the original setting. For example : replacing the keypad escutcheon with other device or if you change the system and want to change the behavior of the output relays.

WARNING : Replacing the keypad escutcheon does not require authentication because the codes are stored in the control unit.

The set-up button allows following functions:

- fingerprint authentication
- relay mode setting
- reset of the control unit.

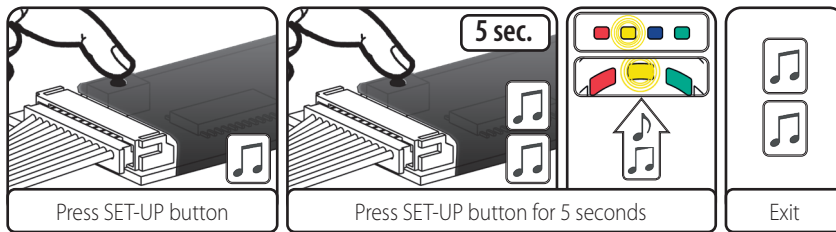


2.1 - FINGERPRINT ESCUTCHEON AUTHENTICATION

Fingerprint escutcheon must be authenticated with the control unit. For this operation, refer to the specific instructions.

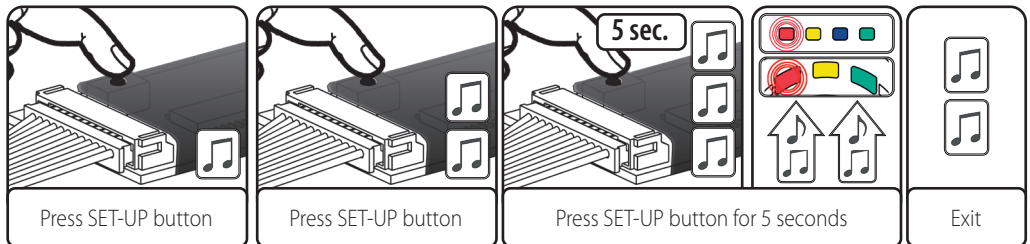
2.2 - COMPLETE RESET OF THE CONTROL UNIT

To set the mode with single relay (only R1 can close) press the button as follows :

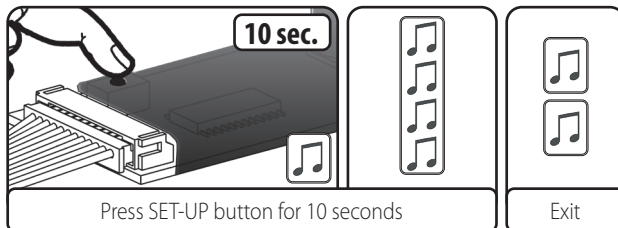


2.3 - SETTING THE DOUBLE RELAY MODE

To set the mode with double relay (both R1 and R2 can close) press the button as follows :



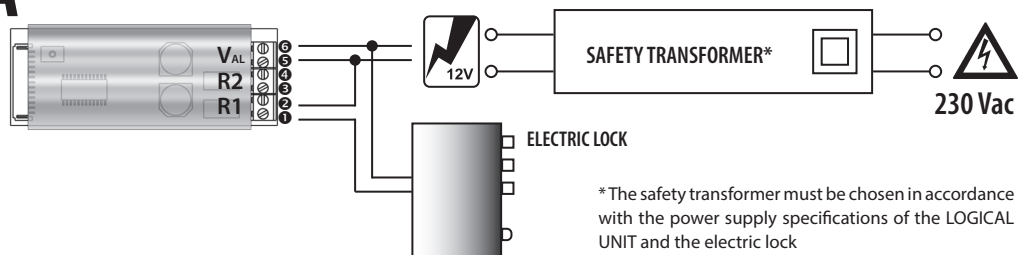
2.4 - COMPLETE RESET OF THE CONTROL UNIT



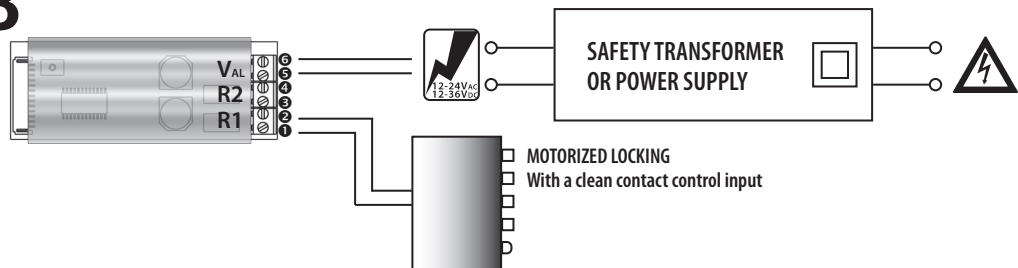
ATTENTION : this operation deletes all tags, pin codes (keypad escutcheon) or authentication (fingerprint escutcheon - note: it does not erase the fingerprints stored in it), and enables the service tags.

3 - ELECTRICAL WIRING

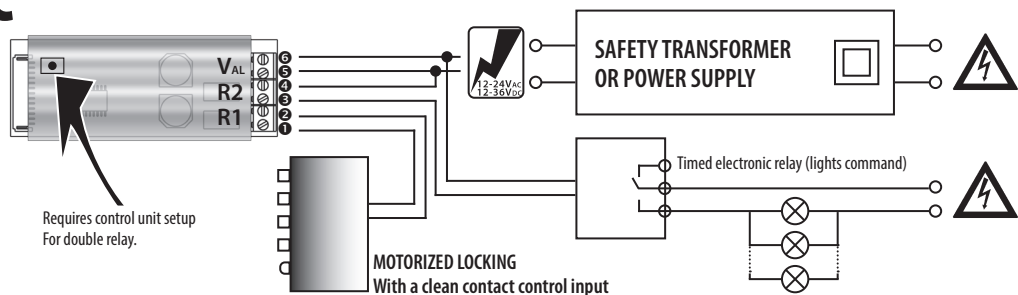
A CONNECTION WITH MOTORIZED LOCKING



B CONNECTION WITH MOTORIZED LOCKING



C CONNECTING WITH MOTORIZED LOCKING + DEVICE FOR AUXILIARY FUNCTION



4 - TECHNICAL DATA

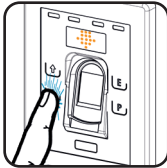
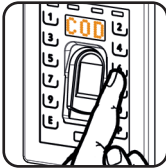
INPUT POWER SUPPLY	AC VOLTAGE / FREQUENCY	12 ÷ 24 Vac / 50-60Hz
	DC VOLTAGE	12 ÷ 36 Vdc
	MAX. POWER	3 W
	MAX. CURRENT DRAW	250 mA
	WORK TEMPERATURE	Min -10 °C ÷ Max. +40 °C
MECHANICAL	WEIGHT	< 0,1 Kg
	DIMENSIONS	105 x 38 x 20 mm
RELAY OUTPUTS	MAX VOLTAGE / CURRENT	30V / 2A ac-dc

If only the control unit is powered, we recommend that you use MOTTURA's network adapter cod. 99.683. Relay contacts provide an impulse with a fixed duration of 1 sec. Please refer to the wiring diagrams provided before connecting the devices.

5 - KEYPAD PROGRAMMING - TAG MANAGEMENT



WARNING : if there are no TAGs memorized in the control unit (when new or after a reset), the programming mode can be accessed via any free Mottura TAG! Consequently, your own master TAGs need to be memorized immediately, followed by any service TAGs, if foreseen, in order to ensure maximum security. After having completed this, only those TAGs that have been memorized will be accepted by the control unit.



ONLY for escutcheons **99775/99776** before each operation, press any key to activate the escutcheon

5.1 MEMORIZING MASTER TAG

1		2		3		 Memorizing MASTER TAG
	Press P		Enter master TAG (1)		Enter master TAG (2)	 TAG already memorized as MASTER TAG
						 TAG already memorized as SERVICE TAG

(1) If the lock is new or has been reset, you can enter the programming mode using any free Mottura TAG!
(2) which will become a MASTER TAG.

To end, press "E" or wait for 30 seconds (exit time - timeout).

5.2 MEMORIZING SERVICE TAG

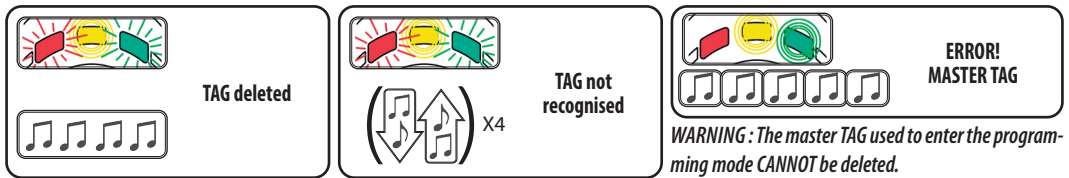
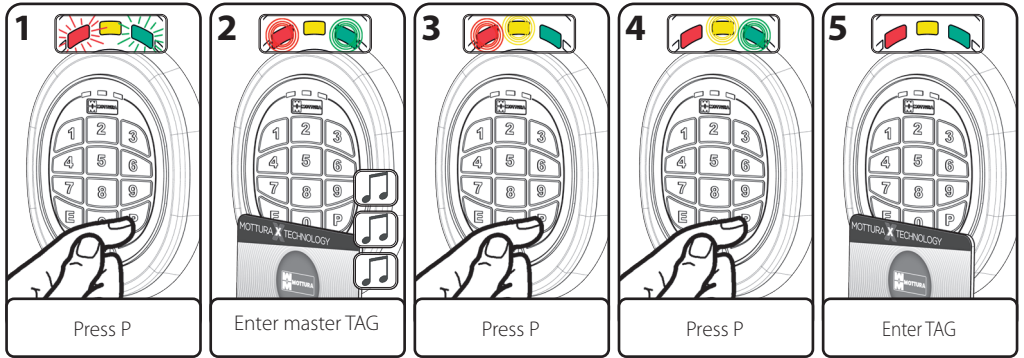


WARNING : if you try to memorize a service TAG before at least one master TAG has been memorized, the service TAG will automatically be memorized as a master TAG.

1		2		3		4		 Memorizing MASTER TAG
	Press P		Enter master TAG		Press P		Enter TAG	 TAG already memorized as MASTER TAG
								 TAG already memorized as SERVICE TAG

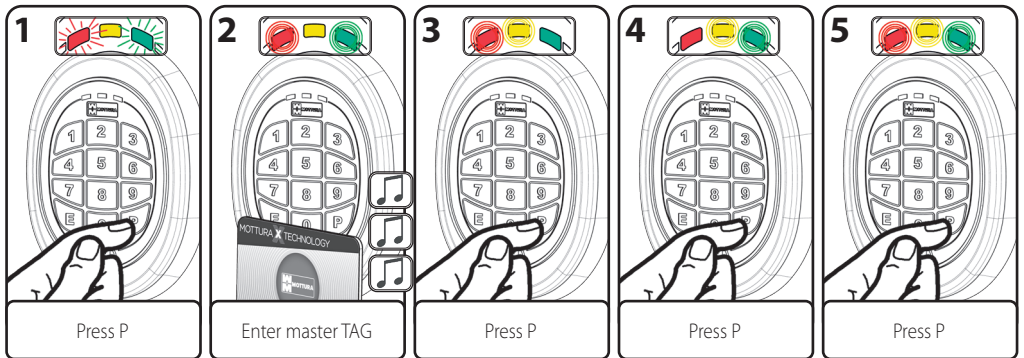
To end, press "E" or wait for 30 seconds (exit time - timeout).

5.3 DELETING INDIVIDUAL TAGS

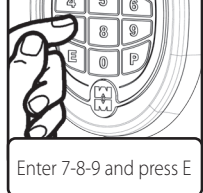


To end, press "E" or wait for 30 seconds (exit time - timeout).

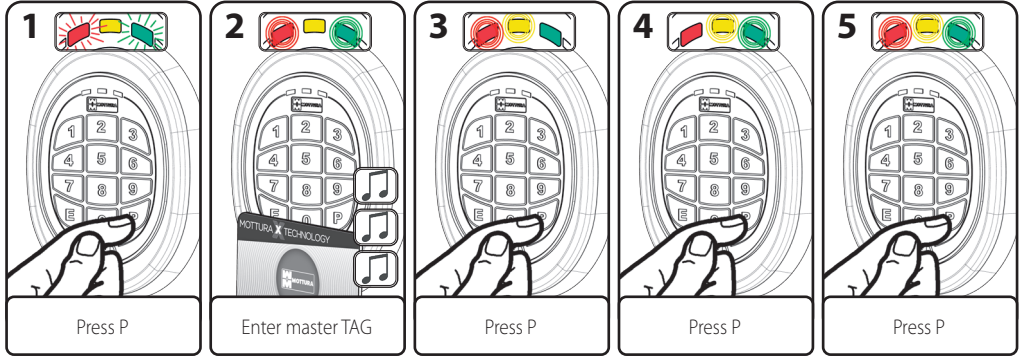
5.4 DELETING ALL TAGS



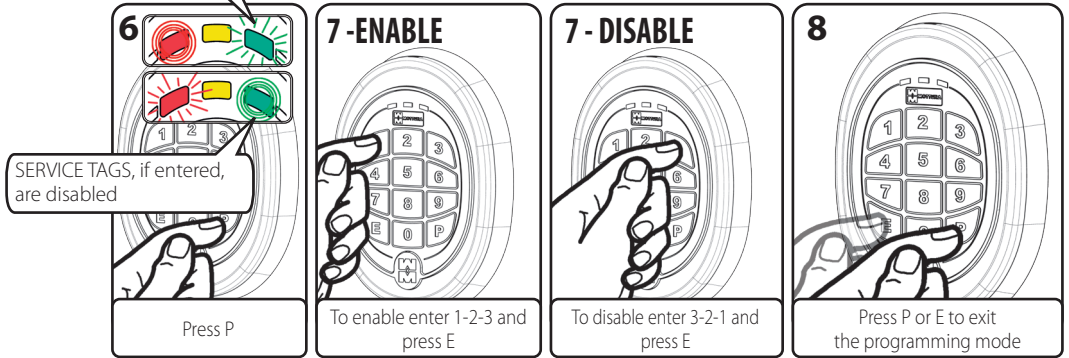
To end, press "E" or wait for 30 seconds (exit time - timeout).



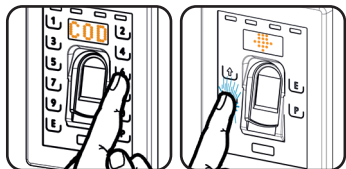
5.5 ENABLING/DISABLING SERVICE TAGS



SERVICE TAGS, if entered,
are enabled



6 - KEYPAD PROGRAMMING - CODE MANAGEMENT



ONLY for escutcheons **99775/99776** before each operation, press any key to activate the escutcheon

6.1 MEMORIZING PERSONAL ACCESS CODES

1 Press P

2 Present MASTER TAG

3 Press P

4 Enter the code and press E

5 CODE stored

6 CODE already memorized

WARNING : Enter a code composed of a minimum of 3 to a maximum of 8 digits

To exit, press "E" or wait 30 sec. (timeout).

6.2 DELETING A PERSONAL ACCESS CODE

1 Press P

2 Present MASTER TAG

3 Press P

4 Press P


5 Enter the code and press E

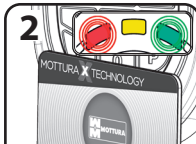
6 CODE deleted




7 ERROR! Unknown CODE


To exit, press "E" or wait 30 sec. (timeout).


6.3 DELETING ALL PERSONAL ACCESS

1  Press P


2  Present MASTER TAG

3  **4**  **5** 

6  Type 9-8-7 and press E

7  Deleting CODES in progress

To exit, press "E" or wait 30 sec. (timeout).

 **WARNING** : If you push the "P" button, you will get the output from the programming.

7 - DUAL RELAY FUNCTIONING

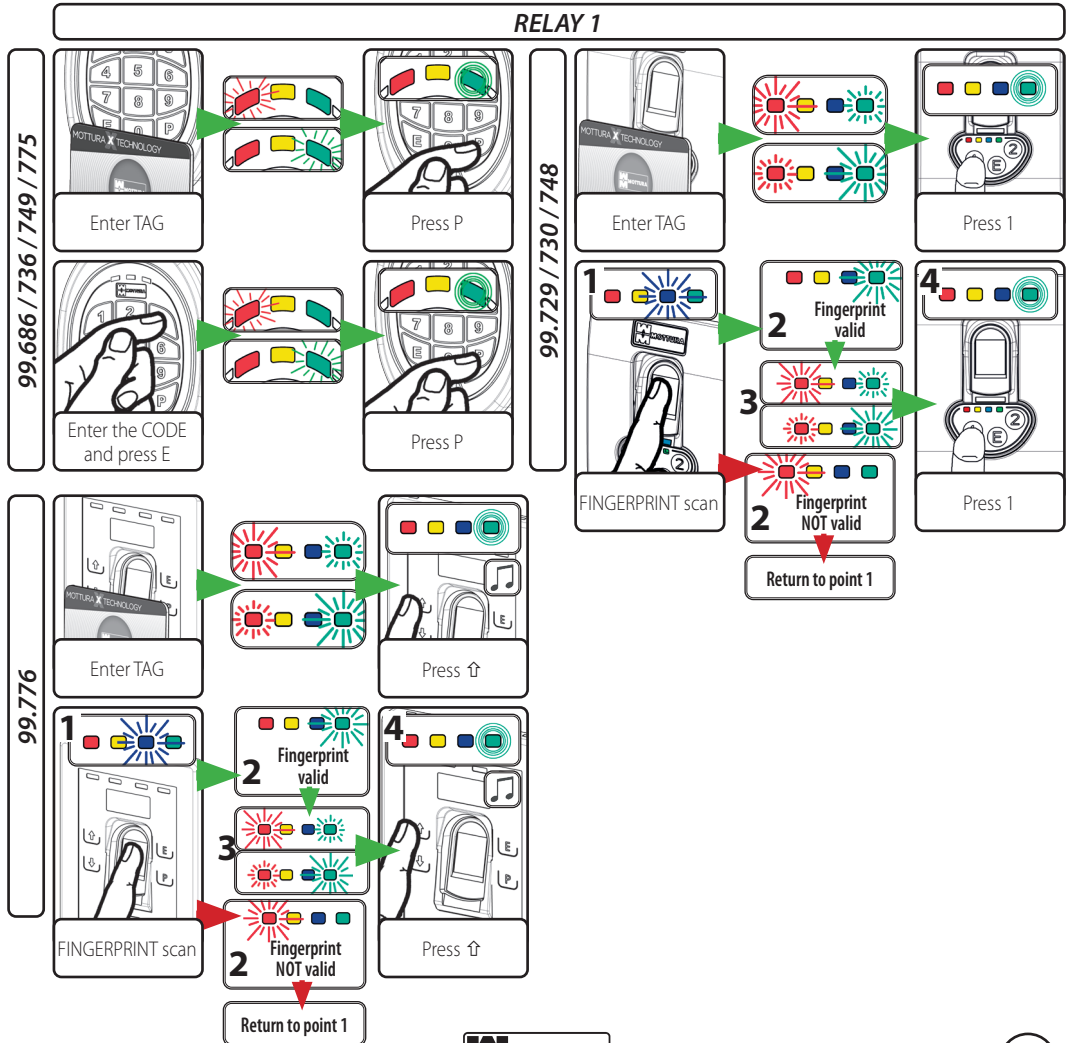


ONLY for escutcheons **99775/99776** before each operation, press any key to activate the escutcheon

Where there are two relays, you have 10 seconds after entering your access credentials to select the RELAY to be closed by pressing:

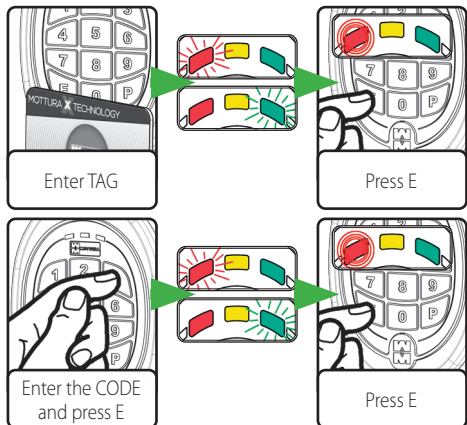
- "P" (on escutcheon 99.686/736/775), "1" (on escutcheon 99.729/730/748) or press ↑ (on escutcheon 99.776) for RELAY 1
 - "E" (on escutcheon 99.686/736/775), "2" (on escutcheon 99.729/730/748) or press ↓ (on escutcheon 99.776) for RELAY 2
- a green or red LED respectively confirm closure of the selected relay.

In accordance with the escutcheon and relay mode, the control unit will act according to the following table:

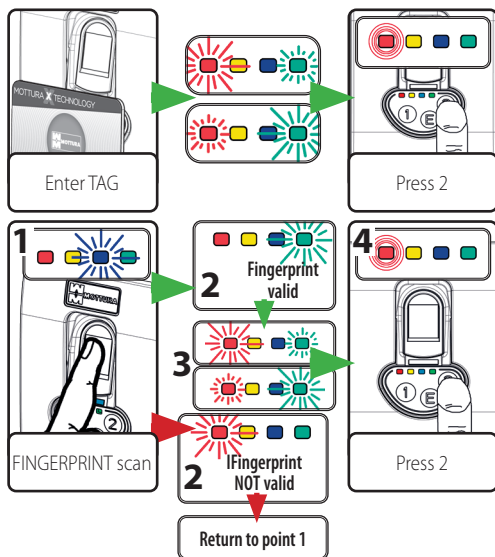


RELAY 2

99.686 / 736 / 749 / 775



99.729 / 730 / 748



99.776

